

# EAK1、EAK3 系列

## EAK1、EAK3 Series

### 特点 Features

- 极佳的低频段衰减特性，具有良好的共模和差模干扰抑制性能。  
High attenuation to low frequency, excellent performance of common mode and differential mode interference suppression.
- 电流容量大。  
Large current.

### 应用 Applications

- 适用于数据处理系统、电信系统、医用设备和工业控制装置中的高性能电源滤波。  
Available for digital systems, telecom systems, medical equipments and industrial installations.

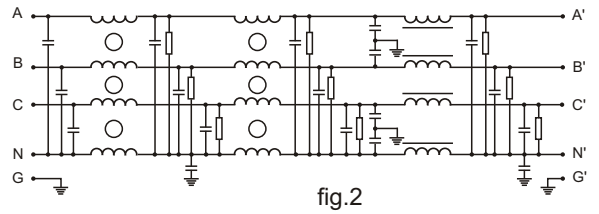
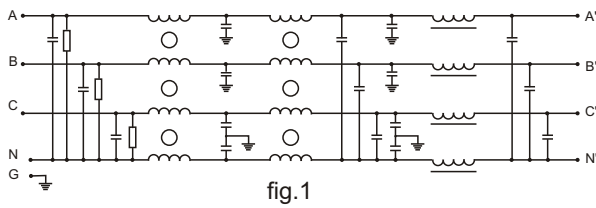
### 技术参数 Technical Data

额定电压 Rated Voltage	250/440 VAC
工作频率 Operating Frequency	50/60Hz
额定电流 Rated Current	50~1000A
耐压试验(一分钟) Test Voltage(1 min)	1500 VDC (line/line) 2250 VDC (line/ground)
气候类别 Climatic Category	40/085/21

型号 Model DL-	端子方式 Terminal		额定电流 Rated Current (A)	接地电容量 Ground Capacitance (nF)	放电电阻 Discharge Resistance (KΩ)	电路图 Circuit Diagram fig.	外形尺寸 Dimension fig.
	入 Input	出 Output					
50EAK1			50	94	440	1	1
80EAK1			80	200	440	1	1
100EAK1			100	200	440	1	1
150EAK1			150	200	440	1	1
300EAK3			300	2.4 μF	660/330	2	2
400EAK3			400	2.4 μF	660/330	2	2
600EAK3			600	2.4 μF	660/330	2	2
800EAK3			800	3.05 μF	660/330	2	3
1000EAK5			1000	3.05 μF	660/330	2	4



## 电原理图 Typical Circuit Diagram



## 外形尺寸 Outline Drawing and Dimensions (mm)

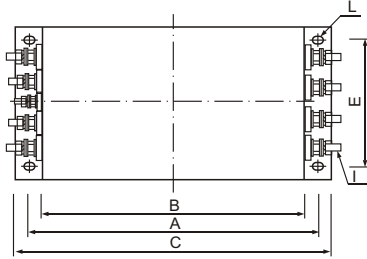


fig.1

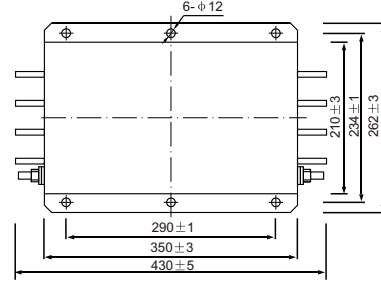
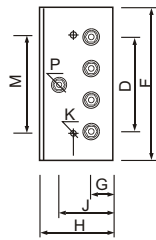


fig.2

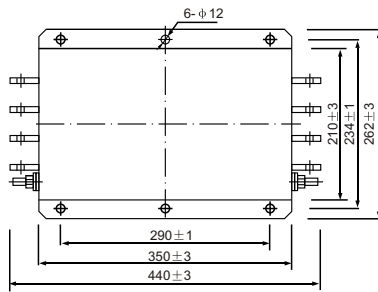
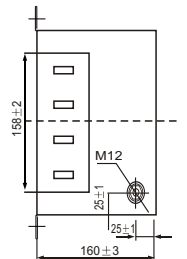


fig.3

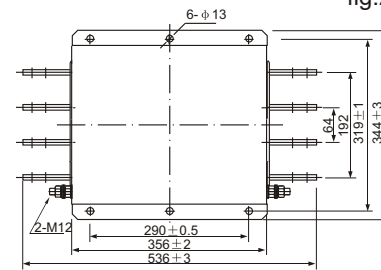
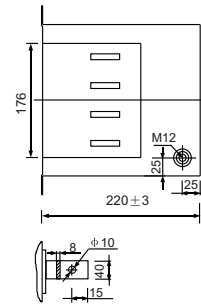
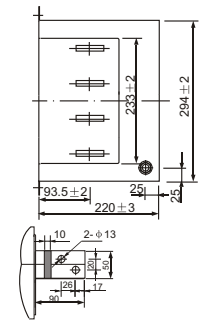


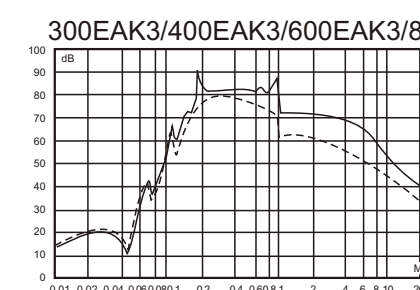
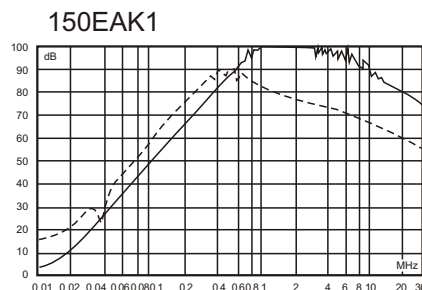
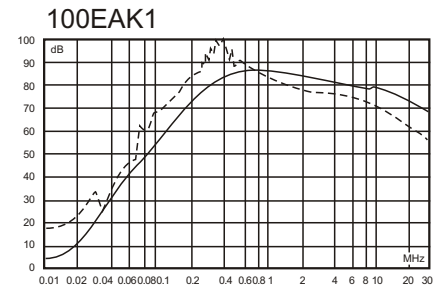
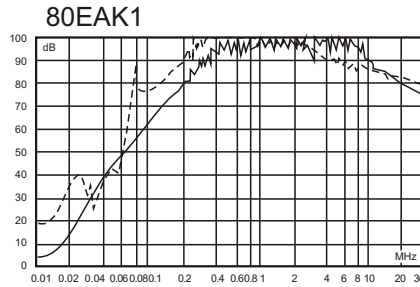
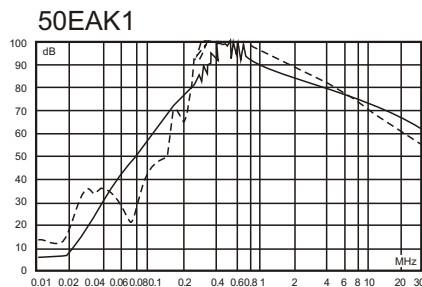
fig.4



MODEL	A	B	C	D	E	F	G	H	I	J	K	M	N	P	L
DL-50EAK1	243	220	261	81	96	125	25	90	M6	58	M4	74	49	M6	6.4×9.4
DL-80EAK1	354	320	384	99	155	185	30	90	M8	62	M4	86	56	M8	6.4×9.4
DL-100EAK1	354	320	384	99	190	220	35	100	M8	62	M4	86	61	M8	6.4×9.4

## 插入损耗 Insertion Loss in dB

(50Ω 测量系统, IEC/CISPR No. 17 号出版物 Measured in 50Ω system, as IEC/CISPR No. 17)



—— 共模(Common Mode)  
 - - - - 差模(Differential Mode)

